



1/5 SIZE CRYSTAL CAN RELAY 2 AMPERE DPDT, .150 GRID

Series
2G

Product Description

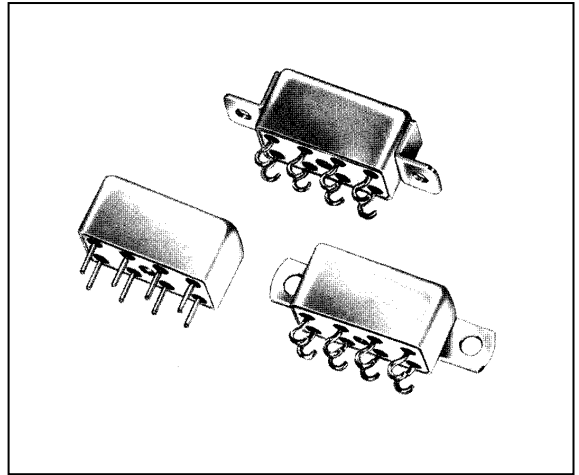
A complete series of 1/5 crystal can hermetically sealed relays. The leading relay design in military and commercial application is represented in Hi-G 2G series relay. The product advanced design provides superior performance in the environmental and operational requirements of today's sophisticated equipment.

The following construction features ensure the highest reliability in extreme environments:

- All welded relay construction
- Cleaning and sealing techniques ensures maximum internal cleanliness
- Low level to 2 amperes switching
- 2 form C, DPDT contacts, special metal alloy with gold plating
- Frame, armature designs and force / mass ratio provides exceptional immunity to shock and vibration.

Series Type

- 2G 2 form C, DPDT



Environmental and Physical Specifications

Temperature (Ambient)	- 35°C to + 80°C
Shock	100 g, 6 ms.
Vibration (sinusoidal)	20 g, 10 to 3000 Hz
Acceleration	50 g
Sealing	All welded, Hermetic
Weight	0,17 oz. (5,29 grams) max.

Electrical Characteristics (over the Temperature range. Unless otherwise noted)

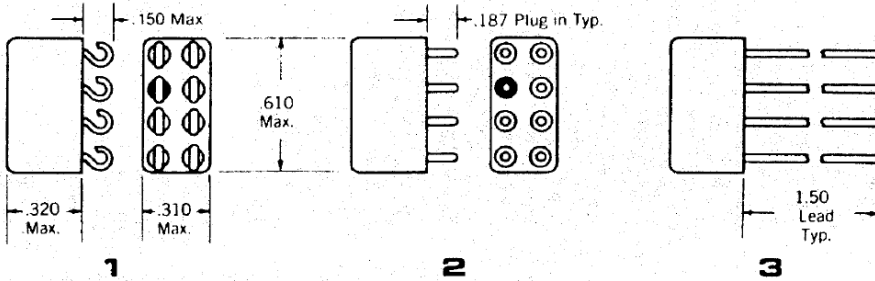
Coil Data	See Typical Characteristics chart			
Contact Rating	Type Load	Contact Load		Cycles min.
		High Level	Low Level	
(Note: All ratings with grounded case)	Resistive	2 A / 28 Vdc 0,3 A / 115 Vac, 60 and 400 Hz	10 to 50 μ A / 10 to 50 mV	100.000 100.000
	Overload	4 A / 28 Vdc	N/A	100
	Inductive	1 A / 28 Vdc (200 mH)	N/A	100.000
	Lamp	0,1 A / 28 Vdc	N/A	100.000
Contact Resistance	0,05 Ω max. initial, 0,1 Ω max. after life high level, 0,15 Ω max. after low level			
Operate Time	4,0 ms. Max.			
Release Time	4,0 ms. Max.			
Contact Bounce	2,0 msec. max.			
Dielectric Strength	750 Vrms min., 60 Hz, all points, 500 Vrms min. between open contacts and coil to case, at sea level			
Insulation Resistance	10.000 M Ω min. all points at 500 Vdc			
Sensitivity	135 milliwatts at 25 °C			



1/5 SIZE CRYSTAL CAN RELAY 2 AMPERE DPDT, .150 GRID

Series
2G

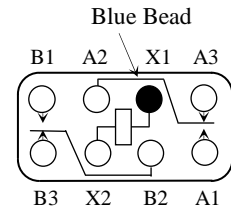
Terminal Styles



Note:

- Dimensions are shown in inches (millimetres)
- Terminal spacing is .150. Terminal diameter is .020

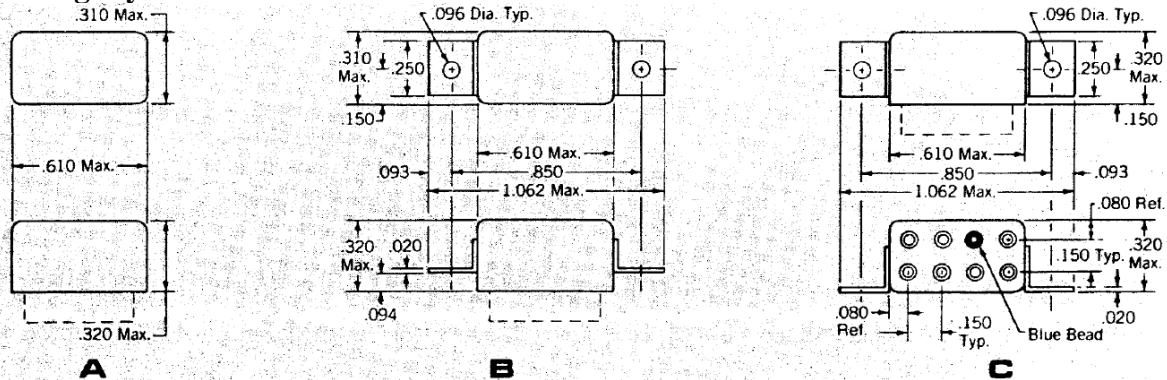
Schematic Diagram



Note:

- Schematic are viewed from terminals

Mounting Styles



Note:

- Dimensions are shown in inches

Electrical Characteristics (over the Temperature range. Unless otherwise noted)

Voltage Code	Coil Voltage (Vdc)		DC Coil Resistance (ohms $\pm 10\%$ @ 25°C)	Max. Pick-Up Voltage (Vdc)		Min. Drop-out Voltage (Vdc)	
	Nom.	Max.		25°C	125°C	25°C	125°C
105	5	7	44	2,4	3,3	0,26	0,16
106	6	8	56	2,7	3,8	0,30	0,18
109	9	12	140	4,4	6,0	0,50	0,30
112	12	16	210	5,4	7,4	0,60	0,36
118	18	24	650	9,5	12,8	1,00	0,60
126	26,5	35	1350	13,5	18,0	1,50	0,90
136	36	46	2245	17,1	23,0	1,90	1,20

How to Order (Part Numbering System)

